

**THE BEST PARTNER FOR  
YOUR SAFETY LIFE**

Rectangular Mirror  
Round Mirror



# 01 / Type and Standard of Stainless Steel Convex Mirror

These convex mirrors are manufactured by Mirrortech in South Korea.

They are recognized worldwide as a quality brand that not only has a very high quality reflective image.

We assure the improvement of public facilities, convenient purchase attractive prices by our certified quality.

We offer best products that avoid harmful effects caused by low quality and inferior material.



## Unbreakable Stainless Steel Convex Mirror\_Round

Type	Material	Size	Radius of Curvature	Mirror Thickness
Round	Stainless Steel 304	Ø1000mm	3600 mm	1.0mm
		Ø800mm	3000 mm	0.9mm
		Ø600mm	2200 mm	0.8mm



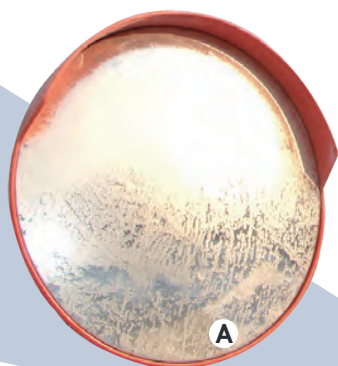
## Unbreakable Stainless Steel Convex Mirror\_Rectangular

Type	Material	Size	Radius of Curvature	Mirror Thickness
Rectangle	Stainless Steel 304	800 x 600mm	3000 mm	0.9mm

\* The Mirror at the shade can be added

# 02 / Function of Dent Prevention and Anti-Frost

## Unbreakable Stainless Mirror Face

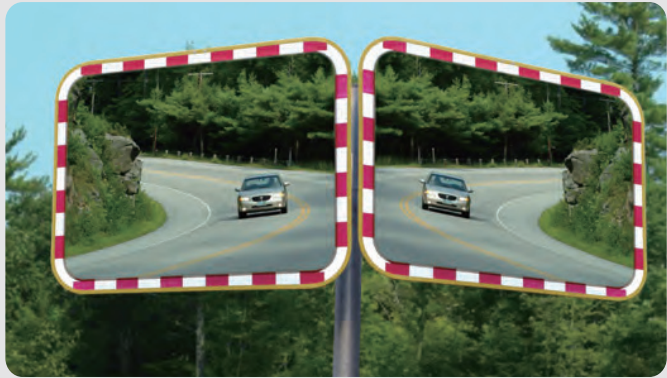


## Outdoor Environment Test

Type	Date	Temperature	Humidity
A: Plastic Round	12th Jan. 2010 07:30-11:00 am.	-14℃ ~ -16℃	36 ~ 38%
B: onbiz Round			
C: onbiz Rectangular			

## 03 / Performance & Function (Safety Reflector Frame)

Function to prevent traffic accidents day and night, by improving drivers' attention by attached safety reflector frame around the mirror.



Daytime

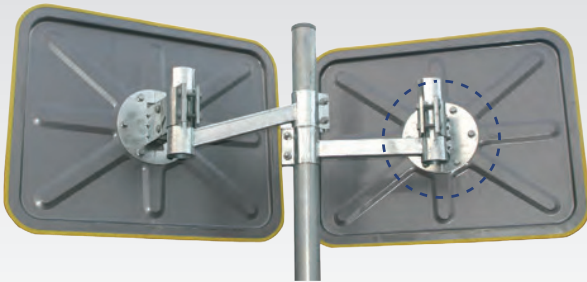


Nighttime

## 04 / Function for Exact Adjustment of Mirror Angle

The installed bracket prevents any displacement of the mirror angle.  
(component of connection between pole and mirror.)

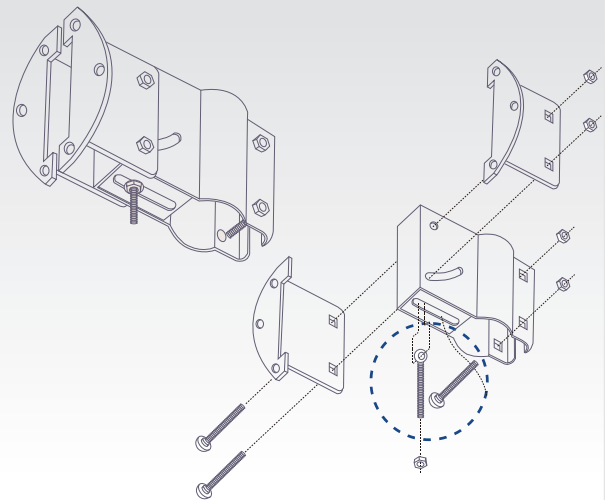
Wall Mount System



### ● Function and effect of best product

- keeps the mirror in fixed position.
- no more maintenance needed after installation.

Bracket\_Bracket to prevent displacement





Production Process, Mirrortech

**onbiz GmbH** is importing commercial traffic mirrors and other road equipments made by the South Korean manufacturer **Mirrortech** to Europe. The products are remodelled to adjust them to the requirements of the European market.

Those competitive high quality mirrors will be sold across Europe through a sales network that will take care well of the customers needs and fully serve their expectations.



**onbiz GmbH** Hauptstr. 336, 65760 Eschborn, Germany  
Tel: +49-6173-966 89 19 Fax: +49-6173-966 89 22 e-mail: [info@onbiz.eu](mailto:info@onbiz.eu) [www.onbiz.eu](http://www.onbiz.eu)



**Mirrortech** #48-1, Geumhyeon-ri, Gasan-myeon, Pocheon-si, Gyeonggi-do, Korea  
Tel: +82-31-533-5755, 529-7119 Fax: +82-31-533-5750 e-mail: [mirrortech@naver.com](mailto:mirrortech@naver.com) [www.mirrortech.co.kr](http://www.mirrortech.co.kr)